

# SplashSurface

The Future of Kitchen Design



# CeramicSteel Surfaces

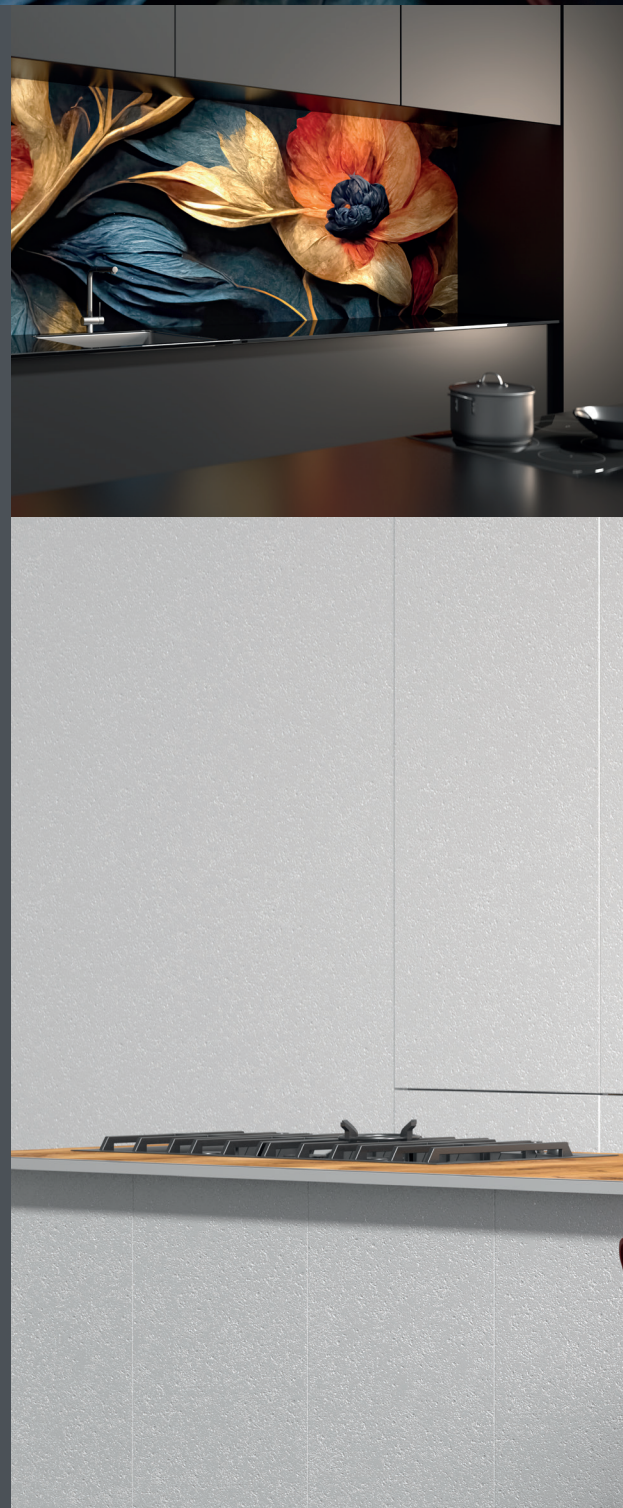
Durability, Functionality,  
and Safety for all Surfaces.

**For more than 70 years,  
Polyvision has been  
manufacturing CeramicSteel  
surfaces that endure  
the harshest environments**

Formerly known as Alliance, Polyvision's roots trace back to 1954, when it began manufacturing enameled steel for whiteboards, chalkboards, and architecture.

Throughout history, Polyvision has prioritized innovation and utilized advanced manufacturing technologies and material science to create the longest-lasting and most eco-friendly CeramicSteel surface available anywhere.

At Polyvision, we believe in the power of collaboration. We partner with renowned visionaries, researchers, and designers worldwide. This global network fosters our tradition of producing innovative products, ensuring that architects and building professionals everywhere have access to the best solutions.



# Introduction to SplashSurface

SplashSurface is designed for modern homes and combines style with practicality, making it an essential component in any contemporary kitchen.

**Our living spaces are constantly evolving, so are the standards of functionality and design. Polyvision is a globally recognized leader in CeramicSteel surfaces, and we would like to introduce SplashSurface - an advanced splash wall solution that meets these new standards with durability and sophistication.**







# The Vision Behind SplashSurface

**The kitchen is more than just a space to create delicious meals; it's a space for showcasing creativity. Keeping this in mind, we have designed SplashSurface to elevate every kitchen's functionality and aesthetic appeal. Our product is made of high-quality porcelain enameled steel, making it visually stunning, incredibly durable, and practical with several unique features.**

## Market Differentiation

Polyvision's Surface Design process creates high-resolution images and intricate designs that are permanently fused into SplashSurface surfaces, offering limitless decorative possibilities. This technology lets consumers personalize their kitchen walls with many patterns, images or color palettes, ensuring each installation is tailored to their home's decor.

SplashSurface's bespoke approach makes it easy to integrate seamlessly into any interior design theme, from minimalist modern to rustic or classical, making it an attractive option for new construction and renovation. Surface design on CeramicSteel enhances the surface without compromising the product's durability and heat-resistant qualities, maintaining all the functional benefits while enhancing the aesthetic value.

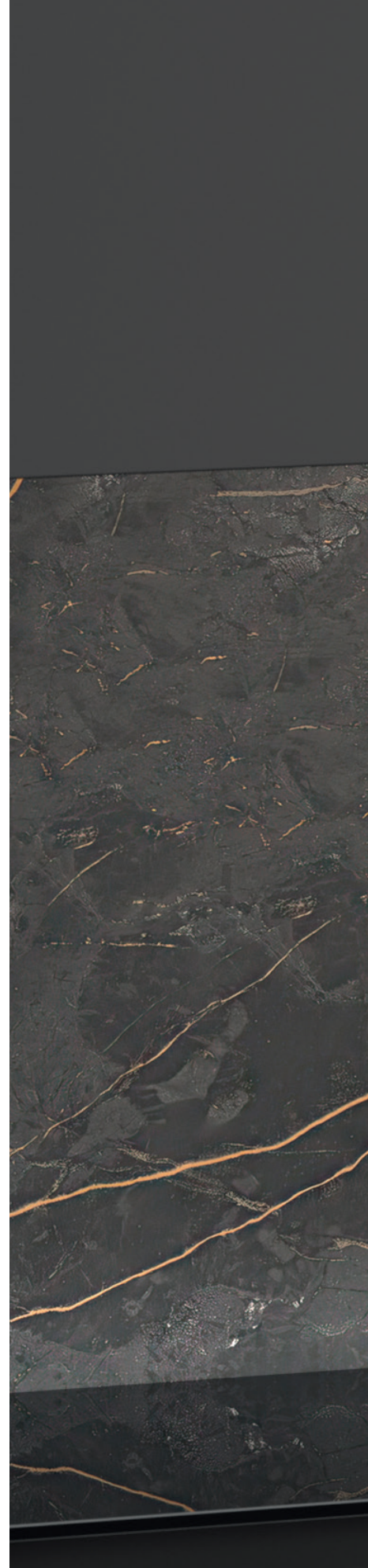
# Product Features

SplashSurface goes beyond traditional splash walls by providing a solution at the forefront of technology and design trends. It's not just a wallcovering; it's the future of kitchen aesthetics.

CeramicSteel surface is resistant to bacteria and viruses. It is nonporous, which means pores or openings that allow bacteria and viruses to enter. Polyvision's Hygienic CeramicSteel is also available in coils, sheets, and panels with a type U and L finish. This finish contains an additive of silver microparticles that creates a self-sanitizing surface.

## Features and Benefits

- Smooth, inert surface
- Made from inorganic materials
- Magnetic
- Colorfast, will never fade
- Resistant to bacteria, scratching, staining, chemicals and fire
- Easy to clean
- Releases zero VOCs





# Why SplashSurface

Splash walls are an important feature in the kitchen, serving practical and aesthetic purposes. They protect the walls behind the countertop and sink from staining with water, grease and food elements during meal preparation, keeping the walls clean and free from damage.

SplashSurface creates a non-porous barrier that prevents food elements and liquids from penetrating the walls, which can cause bacterial and mold growth. Polyvision's SplashSurface is easy to clean, ensuring a hygienic kitchen environment.

Aesthetically, splash walls enhance the kitchen's visual appeal by introducing color, texture, and pattern. They can serve as a focal point or complement the kitchen's overall design.

Polyvision's SplashSurface requires minimal maintenance, minimizing the daily cleaning process. Our surface is moisture-proof and durable, resisting heat, staining, and damage from cooking implements to provide an ideal solution for busy kitchen spaces.





# Material Comparison

## Tiled backsplash

### Advantages

- Timeless and classic in design
- Can complement the kitchen's existing aesthetic
- Italian porcelain tiles are easier to clean, durable, and moisture-resistant

### Disadvantages

- The grout around the tiles can be difficult to clean
- Requires more attention to detail of each tile

## Glass backsplash

### Advantages

- A modern and sleek choice
- Heat resistant
- Easy to clean and sanitize
- Varying colors and patterns to brighten up your kitchen

### Disadvantages

- Higher cost for correct installation
- Fingerprints may be seen more quickly

## Stainless Steel

### Advantages

- A heat and water resistant option
- Can look very modern for all ages of kitchen's

### Disadvantages

- Dependent on the size of the splashback it can look too industrial
- Need to clean often as dried food or stains can be difficult to remove

## Acrylic backsplash

### Advantages

- More cost-effective than glass splashback
- Multiple choice of vibrant colours
- Hard wearing

### Disadvantages

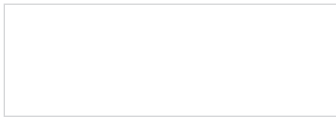
- More prone to show scratches
- Can look cheap compared to glass or tiled splashbacks



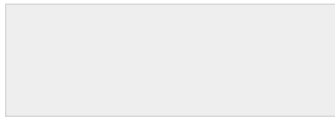


# Colors

Our CeramicSteel products come in a variety of colors, ranging from bright and dynamic to subtle and refined, and they are designed to elevate any area with the quality and reliability for which Polyvision is known. For those who need personalized solutions, we also offer surface design to explore customization. You can choose from our predefined color options or create custom graphics to fully express your vision in any setting.



**Arctic White CS Gloss \***  
Polyvision Color Code 7636



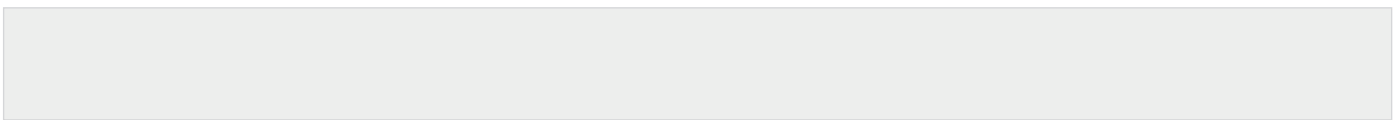
**White Gloss \***  
Polyvision Color Code 6100



**Light Grey Gloss**  
Polyvision Color Code 6101



**Beige Gloss**  
Polyvision Color Code 6102



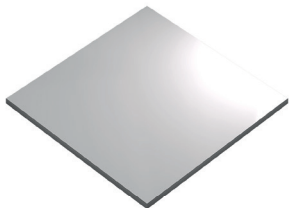
**Hygienic White CS Gloss\*\***  
Polyvision Color Code PV09

**NOTE\*** Surface Design is only available on white gloss 6100

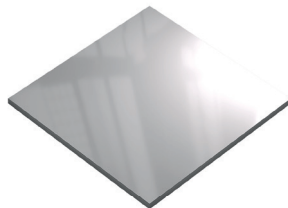
**NOTE\*\*** Patterns not possible with Hygienic.

# Surface Types

Several gloss levels possible



**Satin Gloss**

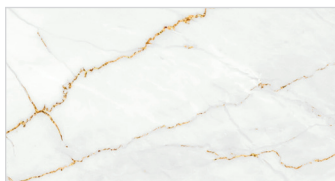


**High Gloss**

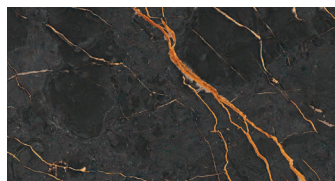
**Surface Design Patterns** - Other patterns possible



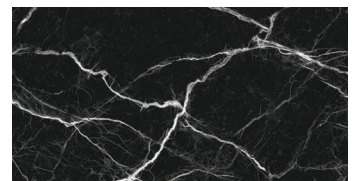
**Light Calacatta**



**Gold Calacatta**



**Ombre Calacatta**



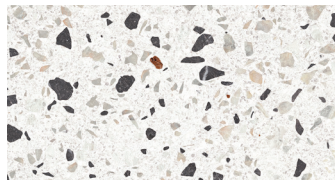
**Dark Calacatta**



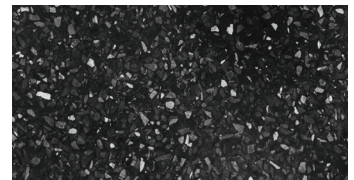
**Neutral Concrete**



**Grey Concrete**



**Light Terrazzo**



**Dark Terrazzo**



# Specifications

Property	Specification	e <sup>3</sup> H
Total thickness enamel top coatings	ISO 2 178 / ASTM B499	85 - 12 0 µm / 3.35 -4.72 mills
Steel thickness		28 - 24 ga
Thickness back-side enamel coating	ISO 2 178 / ASTM B499	Type A: 2 5 - 50 µm / 0.98 - 1.97 mills Type B : 35 - 50 µm / 1.38 - 1.97 mills
Total thickness		0.017 - 0.029 in
Available standard widths		47 -7/8 inch - 59-7/8 inch
Available standard colors		see above
Weight (typical)		2 .9 - 3.2 kg/m <sup>2</sup>
Color deviation from standard	ISO 7724 / ASTM D2 244-02	ΔE <sup>94</sup> = 1 .5 max
Gloss	ISO 2813 / ASTM D52 3 60° ISO 2813 / ASTM D52 3 20°	(Indicative: 92 GUJ 55 (+10/-5) GU
Mohs surface hardness	EN 15771	Min. 5
Scratch resistance	ISO 15695	Min. 7 N
Pencil hardness	ASTM D-3363	> 9H
Wear resistance	ASTM C 501 (Abrasive S 33/1 kg/1000 revs.J	Max. 0.1 g
Impact resistance	ISO 4532 (2 0N - 24h)	< 2 mm
Cold acid resistance	EN 14483-1-9 / ISO 28706-1-9	Min.A
Solvent resistance	EN ISO 28762 §6.7	No change
Fire resistance	EN 13501-1 +A1	Incombustible - Class A 1
Color stability	ASTM C 538	ΔE <sup>94</sup> ≤ 5
Cleanability	EN ISO 28762 §8.2	Excellent (ΔE <sup>94</sup> ≤ 1.5)
Resistance to staining	EN ISO 28762 §8.2	Excellent (ΔE <sup>94</sup> ≤ 1.5)
Resistance to vandalism	EN ISO 28762 §9	No change
Magnetic property		Magnet retaining: standard (Ferrite) or rare-earth (Neodymium) magnets
EN ISO 28762	EN ISO 28762	Fulfilled
European Enamel Authority	EEA Quality Requirements	EEA 7.17: Fulfilled
MBDC Cradle to Cradle Certified	Cradle to Cradle Bronze	Certified
PEi 1002 compliant	PEi 1002	Fulfilled
ISO 9001, ISO 14001 compliant	ISO 9001	Certified

**NOTE** 9016M does not qualify for e3 H specifications.



# Corporate Responsibility

Polyvision believes that sustainability is an important business practice in today's global economy. In line with this belief, we strive for continuous improvement in all areas of environmental stewardship — responsible use of raw materials and natural resources, manufacturing processes and operation of all facilities — to reduce the impact of our activities on the environment. In the end, we believe we are all in this together, working to protect and cultivate the world we live in to make more sustainable choices.



## Manufacturing Excellence

All Polyvision facilities are compliant with international standards and certified for Quality, Environment, Health and Safety. Our environmental goals aim to reduce and manage our global environment footprint in the areas of VOC emission, water use, waste output and CO<sub>2</sub> emission.



- ISO 9001 Quality Management Systems Certification
- ISO 45001 Occupational Health & Safety Management Certification



## Ensuring A Sustainable Future

In addition to safe and sustainable manufacturing processes, Polyvision holds our products to the highest standards. We are third-party certified for our CeramicSteel surface by:

- **Cradle to Cradle Certified®** Bronze — releases no harmful chemicals into the environment, safeguards clean water, materials are safe for humans and the environment
- Indoor Air Quality Certified to SCS.EC10.3-2014 v4.0
- ISO 14001 Environmental Management Certification



Our CeramicSteel surface is 99% recyclable, made from 100% inorganic materials, and backed by a twenty-year limited warranty when used in architectural spaces.

We partner with our customers to help them meet their sustainability goals and contribute to architecture's enduring performance and beauty worldwide.



# Limited International Warranty

Polyvision Corporation warrants all porcelain-enameled CeramicSteel surfaces with or without printing used for architectural applications to be free from defects in materials and workmanship for the periods set forth herein. This limited warranty is valid from the date of shipment.

## **Surface: 20 year limited warranty**

Polyvision warrants that our surfaces, under normal atmospheric conditions and when sealed from moisture, will not fade, stain, discolor, craze, crack, flake, corrode or peel for a period of 20 years.

## **Panel Construction: 10 year limited warranty**

Polyvision warrants that our panels, under normal atmospheric conditions and when sealed from moisture, will not delaminate from the substrate or warp for a period of 10 years.

## **Warranty does not apply to product failure or loss resulting from:**

- Failure to apply, install or maintain the product at all times in such a way that the back and all exposed edges and joints are protected from moisture exposure
- Failure to laminate to sufficiently rigid substrate
- Normal wear and tear
- Abuse, misuse, vandalism or accident
- Alteration or modification of the product
- Faults in underlying structure or surface attachment

## **Warranty does not cover:**

Materials and services supplied by purchaser or a third party in connection with the fabrication, installation, or maintenance of the product (including, but not limited to, adhesives, sealing agents, substrates, and lamination). Warranty provides exclusive remedies: Pursuant to this limited warranty, Polyvision will repair or, at Polyvision's discretion, replace the defective product at no charge. Or, Polyvision will refund the purchase price for the defective product if repair or replacement is not commercially practicable or cannot be completed in a timely manner.

A product "defect" means an inadequacy in the materials or workmanship of the product that (i) existed at the time the product was received from Polyvision, and (ii) causes a failure of the product to perform under ordinary use in accordance with the materials and documentation accompanying the product.

**This limited warranty is the sole remedy for product defect and no other express or implied warranty is provided, including but not limited to any implied warranties of merchantability or fitness for a particular purpose. Polyvision shall not be liable for any consequential, indirect, special, punitive or incidental damages. Warranty effective 07/03/2024.**



## **Americas**

4301 N Wood DR  
Okmulgee, OK 74447 USA  
info@polyvision.com | 1.678.542.3100

## **Europe, Middle East + Africa**

Zuiderring 56  
3600 Genk, Belgium  
EMEAsupport@polyvision.com | +32.89.32.31.30

## **Asia Pacific**

15th Floor, Kinwick Centre  
32 Hollywood Road, Central District, Hong Kong  
APACsupport@polyvision.com | +852.2520.0160

## **SURFACEMATTERS™**

©2024 Polyvision Corporation. All rights reserved. Trademarks used herein are the property of Polyvision Corporation or of their respective owner. Polyvision Corporation reserves the right to make changes in product design, construction or detail, and to discontinue any product or material without notice.

polyvision.com



28-08-2024 AMERICAS