

Commercial



CeramicSteel Surfaces

Durability, Functionality,
and Safety for all surfaces.

**For more than 70 years,
Polyvision has been
manufacturing CeramicSteel
surfaces that endure
the harshest environments**

Formerly known as Alliance, Polyvision's roots trace back to 1954, when it began manufacturing enameled steel for whiteboards, chalkboards, and architecture.

Throughout history, Polyvision has prioritized innovation and utilized advanced manufacturing technologies and material science to create the longest-lasting and most eco-friendly CeramicSteel surface available anywhere.

At Polyvision, we believe in the power of collaboration. We partner with renowned visionaries, researchers, and designers worldwide. This global network fosters our tradition of producing innovative products, ensuring that architects and building professionals everywhere have access to the best solutions.





Features and Benefits

Features that last a lifetime.

- Smooth, inert surface
- Made from inorganic materials
- Magnetic
- Colorfast, will never fade
- Resistant to bacteria, vandal, fire, scratches, stains, and chemicals
- Easy to clean
- Releases zero VOCs



Commercial Spaces for Tomorrow's Work Environment

The commercial space industry underwent a significant transformation, driven by changing work practices and the need for spaces that promote productivity and well-being. Commercial space planning focuses on creating areas that can accommodate flexible working arrangements, encourage collaboration, and prioritize health and safety. Designers are reinventing the layout and functionality of commercial spaces to support a blend of in-person and remote working models,



adapting to the hybrid work trends that define the modern workforce. At Polyvision, we understand the evolving needs of the commercial sector and are committed to providing innovative solutions. Our CeramicSteel products are designed to meet the changing demands of contemporary workspaces with durability, cleanliness, and versatility.





To do:

- project proposal
- schedule meeting
- draft findings for March
- meet w/ development team

Conf: Outline
- organize thoughts
Draft 1
Draft 2
Final
- 40 pgs
- Due in May



Safe and Adaptable Workspaces

In today's commercial settings, the emphasis on health and hygiene is stronger than ever. It is critical to integrate materials that can withstand rigorous cleaning regimes and reduce the spread of germs that cause illness. Polyvision's CeramicSteel surfaces meet these needs head-on, providing a non-porous, bacteria-resistant foundation for desks, partitions, and wall claddings essential in modern offices.

Our adaptable and aesthetically appealing solutions support the industry's shift towards inspiring spaces. Whether it's an open-plan office needing flexible layout options or a dedicated workstation designed for focus and privacy, our products enhance the look and functionality of any commercial environment.

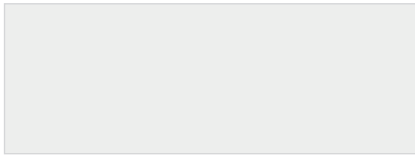
Reflecting Brand and Culture Through Design

The design of commercial spaces is now essential to representing a company's brand and culture. Polyvision recognizes this trend and provides customizable CeramicSteel surfaces that complement corporate brand aesthetics to drive branding, logos, etc. This allows companies to create spaces that align with their identity and values.



Colors

Our CeramicSteel products come in a variety of colors, ranging from bright and dynamic to subtle and refined, and they are designed to elevate any area with the quality and reliability for which Polyvision is known. For those who need personalized solutions, we also offer surface design to explore customization. You can choose from our predefined color options or create custom graphics to fully express your vision in any setting.



White Gloss*
Polyvision Color Code 6100



Light Grey Gloss
Polyvision Color Code 6101



Beige Gloss
Polyvision Color Code 6102



Green Chalk
Polyvision Color Code 6500 C



Grey Chalk
Polyvision Color Code 6502 C



Black Chalk
Polyvision Color Code 6501 C

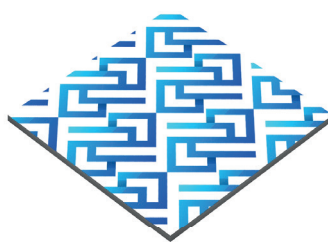
NOTE* Surface design available on white gloss.

Surface Design

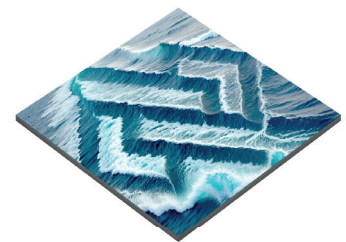
Customize with unique patterns and logo's



Your Logo



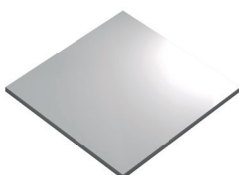
Pattern



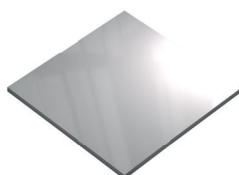
Artwork

Surface Types

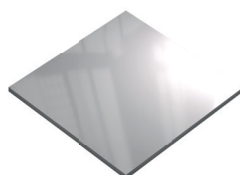
Several gloss levels possible



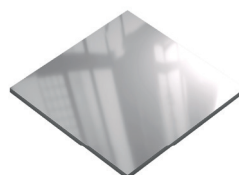
Satin



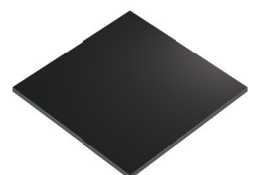
Low Gloss



High Gloss



Ultra High Gloss



Chalk



Corporate Responsibility

Polyvision believes that sustainability is an important business practice in today's global economy. In line with this belief, we strive for continuous improvement in all areas of environmental stewardship — responsible use of raw materials and natural resources, manufacturing processes and operation of all facilities — to reduce the impact of our activities on the environment. In the end, we believe we are all in this together, working to protect and cultivate the world we live in to make more sustainable choices.

Manufacturing Excellence

All Polyvision facilities are compliant with international standards and certified for Quality, Environment, Health and Safety. Our environmental goals aim to reduce and manage our global environment footprint in the areas of VOC emission, water use, waste output and CO₂ emission.

- ISO 9001 Quality Management Systems Certification
- ISO 45001 Occupational Health & Safety Management Certification

Ensuring A Sustainable Future

In addition to safe and sustainable manufacturing processes, Polyvision holds our products to the highest standards. We are third-party certified for our CeramicSteel surface by:

- **Cradle to Cradle Certified**® Bronze — releases no harmful chemicals into the environment, safeguards clean water, materials are safe for humans and the environment
- Indoor Air Quality Certified to SCS.EC10.3-2014 v4.0
- ISO 14001 Environmental Management Certification

Our CeramicSteel surface is 99% recyclable, made from 100% inorganic materials, and backed by a twenty-year limited warranty. We partner with our customers to help them meet their sustainability goals and contribute to architecture's enduring performance and beauty worldwide.



Forever Warranty

Polyvision warrants that all porcelain-enameled surfaces made with e³™ CeramicSteel with or without printing will retain its writing and erasing qualities and maintain its gloss variance and color consistency for the life of the building or for as long as the product is in use, whichever comes first. In addition, Polyvision warrants that any Hygienic CeramicSteel surface manufactured by Polyvision will retain its Hygienic properties for the life of the building or for as long as the product is in use, whichever comes first.

Should any failure to conform to this warranty become apparent, then, upon written notice from the customer, Polyvision, at its option, will correct such nonconformity by repair or replacement. Correction in the manner provided above shall constitute a fulfillment of all liabilities of Polyvision with respect to the quality of the CeramicSteel writing surface. The warranty is applicable only under normal usage and maintenance and does not cover defects caused by improper handling, vandalism or abuse, or arising from failure to follow Polyvision's instructions and recommendations for maintenance.

The warranty is voided if any modifications are made to the products by the customer or other trades with or without Polyvision's written consent or prior knowledge. The warranty does not include the cost of removal or reinstallation. This warranty is effective as of March 7, 2024, and supersedes the terms and conditions of all prior surface warranties issued to the customer by Polyvision.

This limited warranty is the sole remedy for product defects and no other express or implied warranty is provided, including but not limited to any implied warranties of merchantability or fitness for a particular purpose. Polyvision shall not be liable for consequential or incidental damages arising from any product defect.

NOTE Architectural surfaces are covered under the Polyvision Limited International Warranty (20 years).



Americas

4301 N Wood DR
Okmulgee, OK 74447 USA
info@polyvision.com | 1.678.542.3100

Europe, Middle East + Africa

Zuiderring 56
3600 Genk, Belgium
EMEAsupport@polyvision.com | +32.89.32.31.30

Asia Pacific

15th Floor, Kinwick Centre
32 Hollywood Road, Central District, Hong Kong
APACsupport@polyvision.com | +852.2520.0160



SURFACEMATTERS™

©2024 Polyvision Corporation. All rights reserved. Trademarks used herein are the property of Polyvision Corporation or of their respective owner. Polyvision Corporation reserves the right to make changes in product design, construction or detail, and to discontinue any product or material without notice.

polyvision.com



27-08-2024 EMEA APAC