

Workwall Installation Guide

Guidelines for installing
your new Workwall system


English

3	Safety Requirements
4	Handling + Storing of Panels
5	Required Materials + Equipment
6	Key to System Details
7	Standard Extrusions
8	D1 - D4 Systems
12	Installation
18	Warranty

Safety Requirements

Workwall - Wall Mounted Dry Erase Board,
Non-Seismic Applications

The building's Engineer of Record must be consulted to determine if there are any seismic requirements.

	⚠ CAUTION CRUSH HAZARD. Failure to properly secure board could result in personal injury.
	⚠ ATTENTION RISQUE D'ÉCRASEMENT. Ne pas attacher la planche de manière sûre pourrait entraîner des blessures personnelles.
SAFETY INSTRUCTIONS	
<p>Read all assembly directions before beginning installation.</p> <p>Building construction varies greatly. The Building's Engineer of Record is responsible for the design of building walls which the boards are attached to and must verify the adequacy of the mounting hardware, even if provided by Polyvision.</p> <p>The building owner or designated agent is responsible for verifying that the installation is in compliance with all local codes and regulations.</p>	
INSTRUCTIONS DE SÉCURITÉ	
<p>Lisez l'ensemble des instructions d'assemblage avant de démarrer l'installation.</p> <p>La construction des bâtiments varie grandement. L'ingénieur d'enregistrement du bâtiment est responsable de la conception des murs sur lesquels sont attachées les planches et doit vérifier que le matériel de montage est adéquat, même si ce dernier est fourni par Polyvision.</p> <p>Le propriétaire du bâtiment ou l'agent désigné a la responsabilité de vérifier que l'installation est conforme à l'ensemble des codes et réglementations locaux.</p>	
1078781001 Rev A	

Verify Wall Construction

CAUTION! Adequate wall construction is required to support the weight of the board. Minimum wall construction must be capable of supporting weight amounts listed in Table 1 on page 12.

Minimum Required Wall Construction

Drywall with metal studs:

- Must be at least 0.6 mm (.02") thick Metal stud 48.8 mm x 50 mm (1.92" x 1.97")
- Studs on maximum 600 mm (24") centers
- Must be at least 2 x 12,5 mm (.49") Type X gypsum drywall
- 35 mm (1.34") drywall screws on 250 mm (12") centers

Drywall with wooden studs:

- Stud grade SPF, DF-L or Hem-Fir 45 mm x 70 mm (1.5" x 3.5")
- Studs on 600 mm (24") centers
- Must be atleast 25 mm (5/8") thick Type X gypsum drywall for the US or 2 x 12,5 mm (1/2") for EU
- 35 mm (#6 x 1-1/4") drywall screws on 250 mm (12") centers



Handling + Storing of Panels

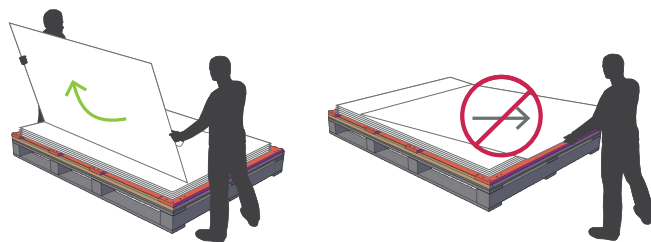
Handling

- When Polyvision panels are shipped, they are protected by craft paper or a self-adhesive transparent polyethylene film. Keep panels in the original package until installation.
- Handle with care to prevent damage.
- Never slide panels off the stack during handling. Panels should always be lifted and moved in a vertical position.
- Never place an Polyvision panel in a vertical position on the floor. This is to prevent damage to the edges.
- Prevent dirt from settling on and between panels to avoid surface damage, scratches or defects.
- Follow all safety instructions regarding personal protection when processing the panels.
- Protect panel surface against sawdust and sparks (metal particles).
- Polyvision panels will chip when cut or drilled with power tools. Hand-cutting can cause chipping up to approx. 2 mm from the edge. When chipping is in excess of 2 mm, please check the state of cutting tools and check that the panel is adequately supported and clamped to prevent it from vibrating.
- All cut or drilled sections should be protected against humidity with PVC tape and/or by covering/sealing profiles or sealing washers.
- For detailed processing instructions, please refer to the panel processing instructions.

Storing

- Keep panels dry and free of debris.
- Store panels inside temps 50-90 °F (10-32 °C).
- Any panels stored outside should be protected from inclement weather conditions.
- Place panels on hard, flat surfaces that are not subject to standing water.
- Polyvision panels should be stacked no more than three high.
- Panels should never be stored vertically or in such a way that the corners are vulnerable to damage.

If you have a problem, question, or a request, call your local fabricator, your regional sales manager or Polyvision Customer Service. Polyvision's global customer service team can be contacted on [Polyvision.com](https://www.polyvision.com).



Required Materials + Equipment

Electrical Equipment

1. Drill
2. Miter saw
3. Grinder
4. Jigsaw
5. Industrial vacuum cleaner

Hardware Equipment

1. Level (laser level recommended)
2. Aluminum straight guide
3. Chalk line
4. Anchors adapted to wall
 - For gypsum walls, use #8 plastic wall anchor with #8 x 1-1/4" (4 mm x 35 mm) self drilling screws.
 - For stone walls, anchors and screws must be provided by installer per conditions
 - Recommended anchor spacing is 406 mm (16") to 610 (24") on center
5. Shims 1 mm - 2 mm - 3 mm (1/32" - 1/16" - 1/8")
6. Soft wood block ± 50 mm x 25 mm x 300 mm (2" x 1" x 12") length or rubber mallet to knock in the coverstrip
7. Glass suction cup lifters (2)

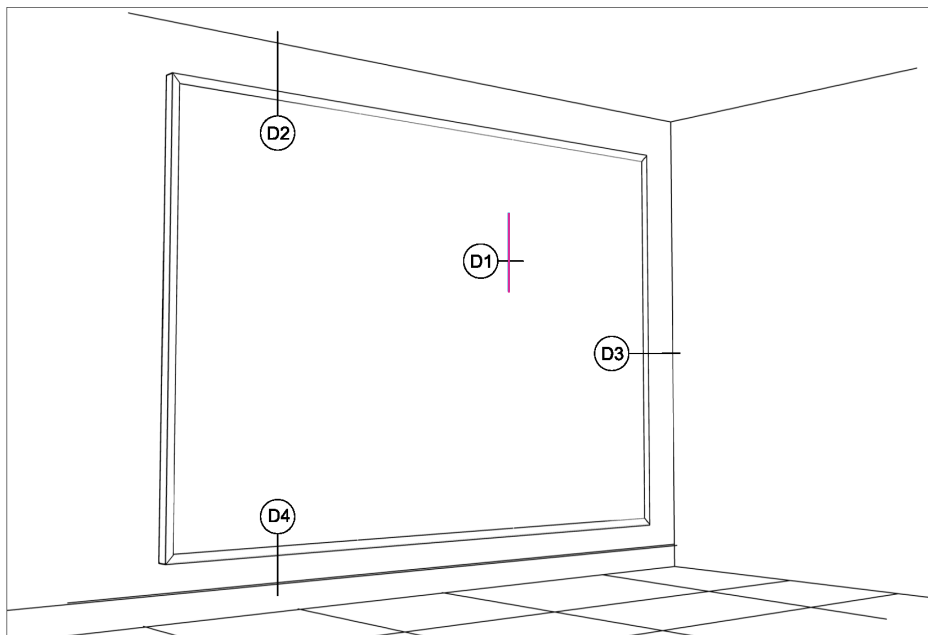
Included Hardware

1. Anchors
2. Screws

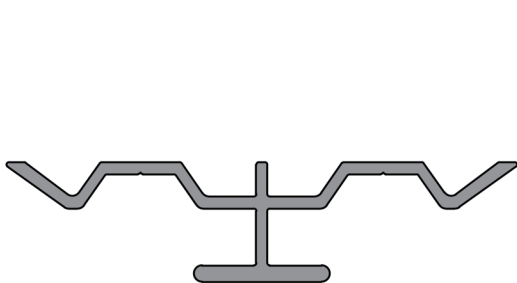


Key to System Details

The details listed in the image below show placement for panel profiles and how the material can be installed. **IMPORTANT:** Profiles must be secured to studs in as many locations as possible and at least 24" o.c. for horizontals and 18" o.c. for verticals.



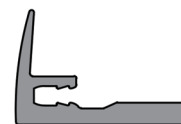
Standard Extrusions



Mid Frame

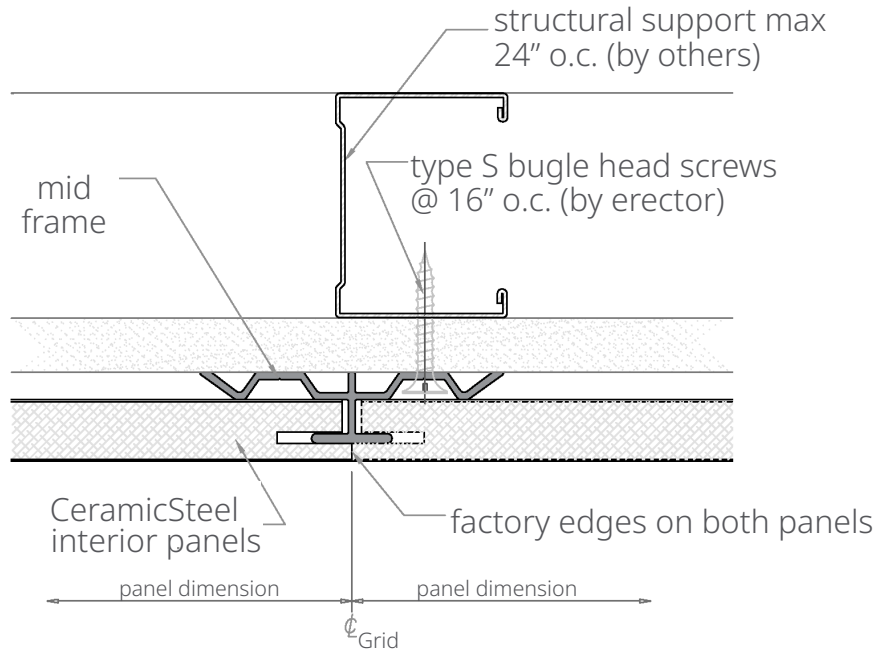


Base Frame

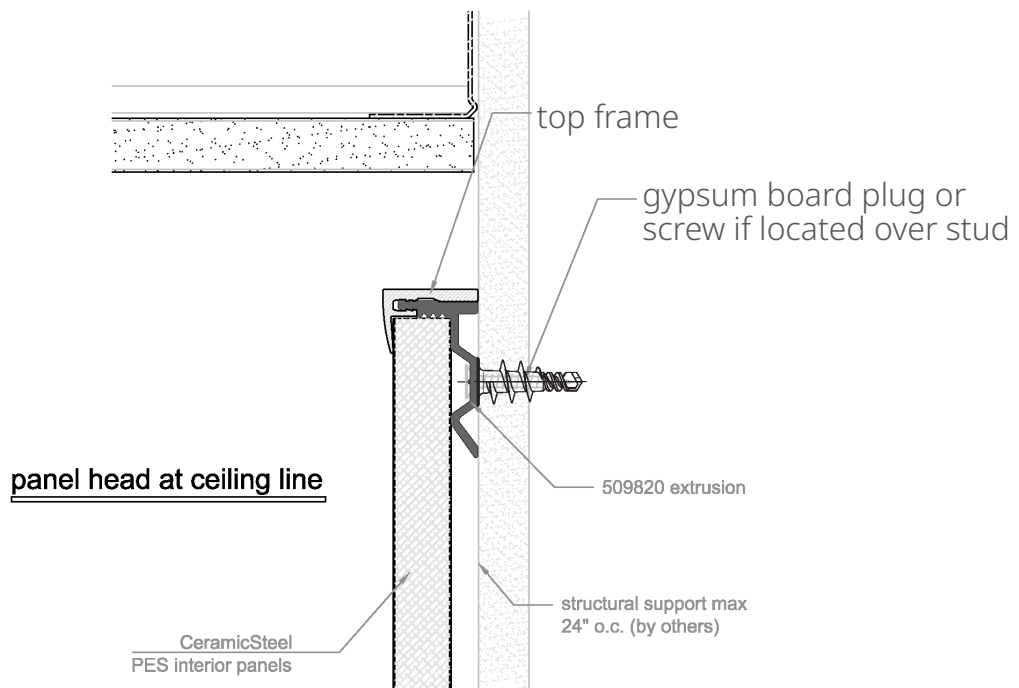


Top Frame

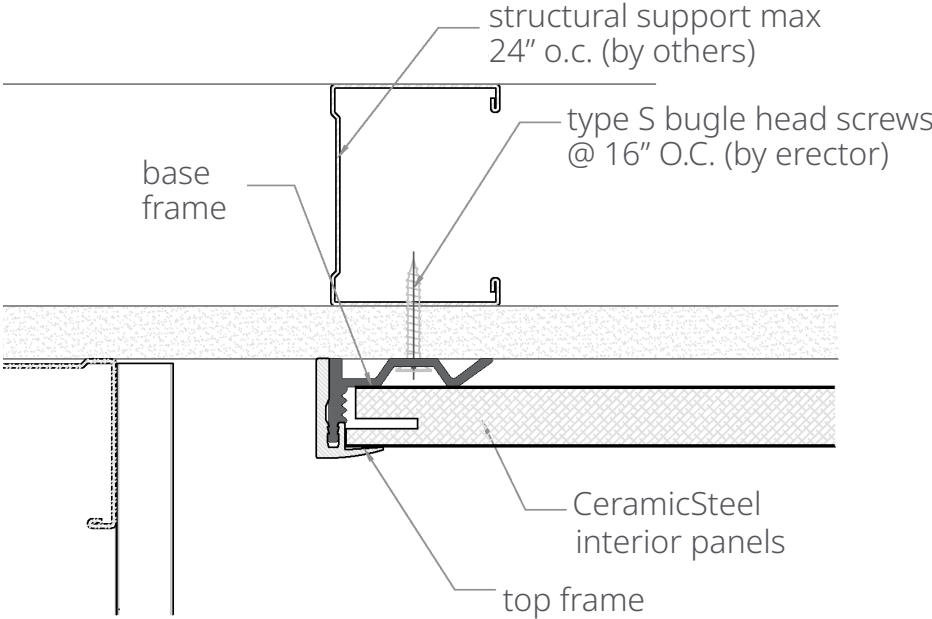
D2 | Panel Head at Ceiling



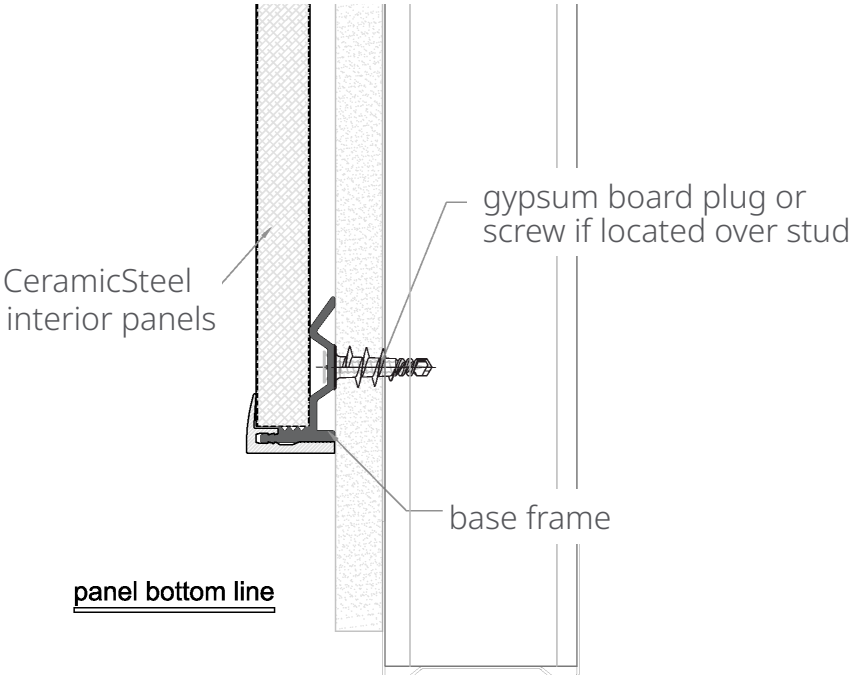
D2 | Panel Head at Ceiling



D3 | Panel Terminator at Wall



D4 | Panel Bottom Line



Installation

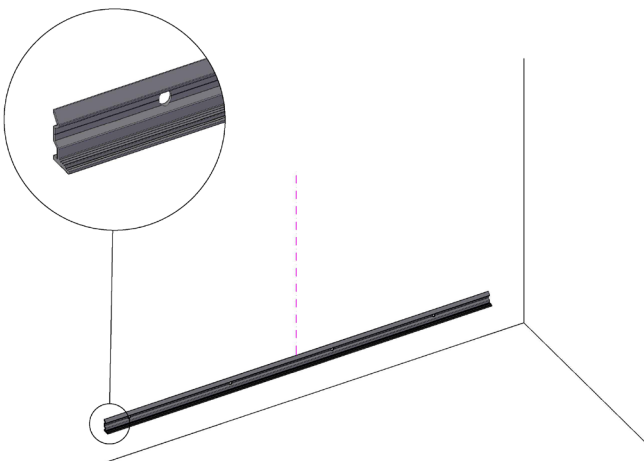
Before starting the installation of Workwall

1. Verify that the required equipment is available and material provided is accurate.
2. Provide adequate protection for finished floor surfaces.
3. If cutouts are required for electrical outlets or switches, refer to the following instructions
 - Square penetrations for light switches and electrical outlets can be made by first drilling a pilot hole and then cutting with a jig saw using a metal cutting blade minimum 14 TPI (teeth per inch).
 - All cutouts should be made with the finish side up, through the protective polyfilm and a layer of common masking tape. Apply masking tape to the entire area. Be sure to apply enough to protect the surface from the baseplate of the saw.
 - Metal burrs left after cutting can be removed with a file or fine sand paper.

Product	Weight (kgs/lbs)
Workwall 1220	18,7 kgs / 41 lbs
Workwall 1830	28 kgs / 61.7 lbs
Workwall 2420	37 kgs / 81.5 lbs
Workwall 2850	47,4 kgs / 104.5 lbs
Workwall 3000	49,9 kgs / 110 lbs

Step One

1. Start with a leveled line for the bottom profile. A laser level is recommended. Be sure to allow a minimum of 3 mm (1/8") space between the profile and the wall base molding.
2. Mark and drill the holes in the wall.
3. Attach the base frame using the provided anchors. Refer to Table 2 for profile dimensions.

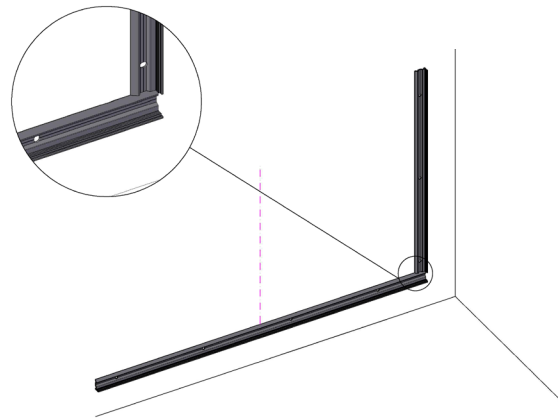


Vertical Orientation		
Panel	Qty	Profile Length
1 Panel	2	1195 mm (47 1/16")
2 Panel	2	2380 mm (93 11/16")
3 Panel	2	3565 mm (140 5/16")
4 Panel	2	4750 mm (187")
Horizontal Orientation		
Wall Length	Qty	Profile Length
12'	2	3670 mm (144 1/2")
14'	3	4280 mm (168 1/2")
16'	2	4850 mm (190 15/16")
18'	3	5500 mm (218 15/16")
20'	3	6090 mm (239 3/16")
24'	3	7270 mm (286 3/16")
30'	5	9160 mm (360 5/8")



Step Two

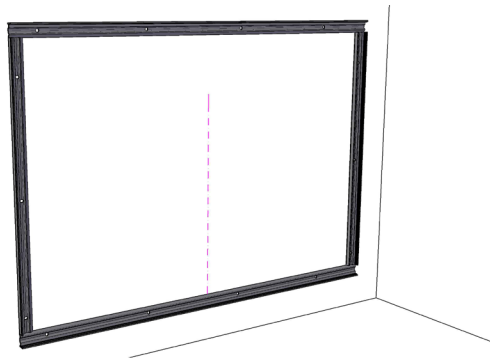
1. Start with a leveled line for the vertical profile (base frame). A laser level is recommended. Be sure to allow a minimum of 3 mm (1/8") space between the profile and any existing wall.
2. Mark and drill the holes in the wall.



Vertical Trim Lengths		
Product	Inch	mm
Workwall 1830	69 - 11/16	1770
Workwall 2420	92 - 7/8	2360
Workwall 2850	109 - 13/16	2790
Workwall 3000	115 - 3/4	2940
Horizontal Trim Lengths		
Workwall 1185	44 - 1/4	1125

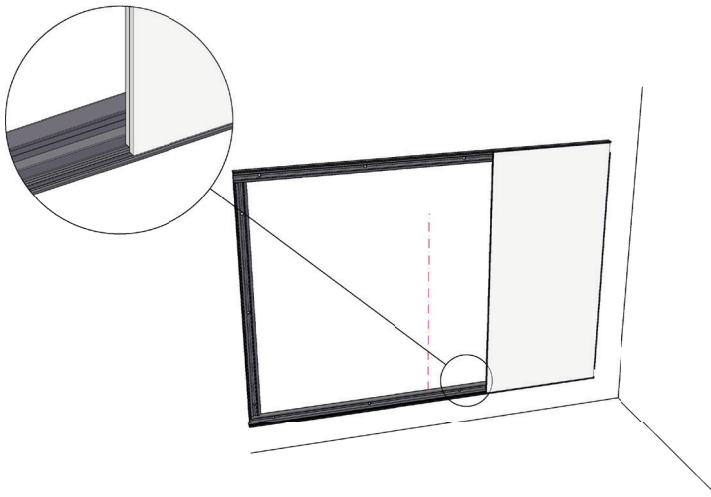
Step Three

1. Repeat steps 1 and 2 for top and adjacent base frames.
2. Mark and drill the holes in the wall



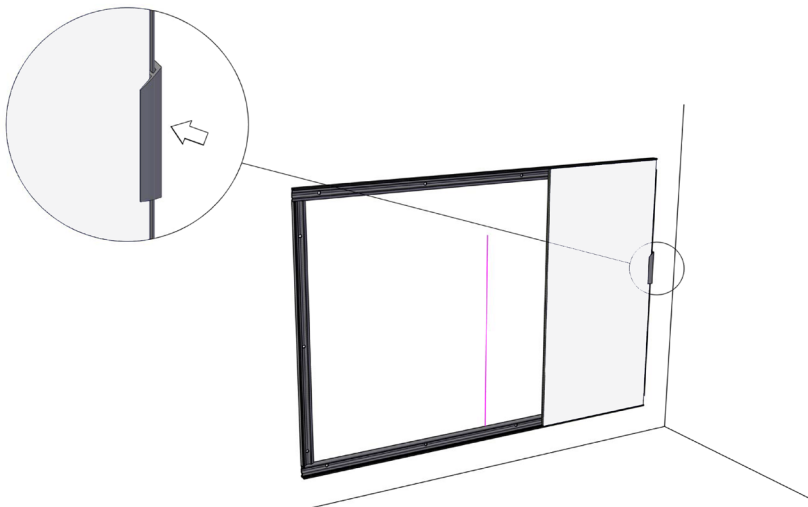
Step Four

1. Before installing the first panel, locate the panel with the logo in the bottom right corner. (Note that the logo is not drawn to size.) This panel will need to be the furthest right panel. This installation guide shows the logo panel as the first to be installed. Installation flows from right to left.



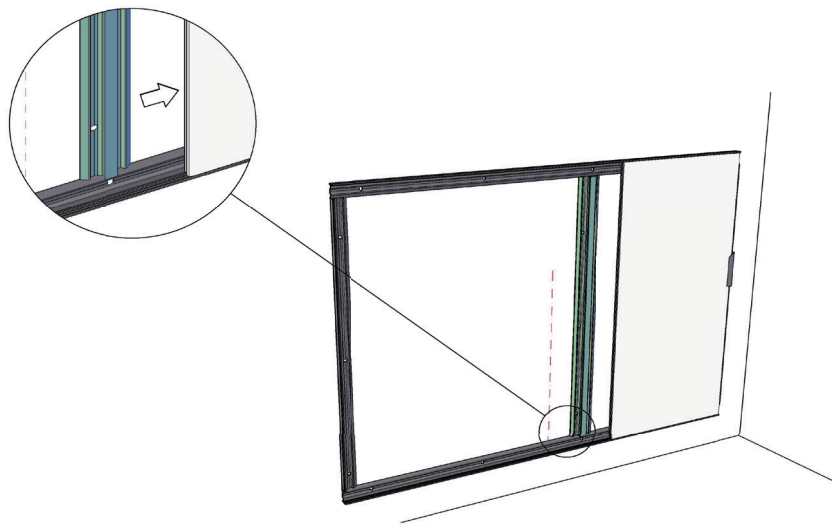
2. Place the first panel (with logo) into position and hold the panel into position with a temporary piece of cover trim 8" (200 mm). The panel must fit against the vertical end profile and the horizontal bottom profile.

Cut pairs of Snap in Trim Extrusion, 8" (200mm) long with 45 mitre at one end. These can be used to temporarily hold the first panel until the Vertical Joint Spline is installed and secured.



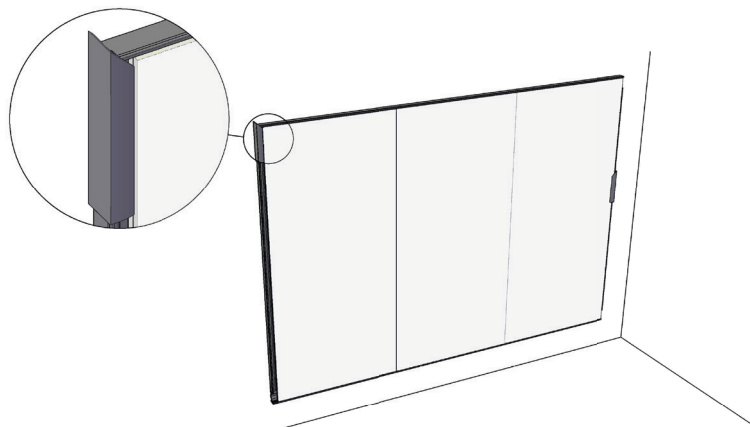
Step Five

1. Insert the mid frame (H-profile) into the vertical side of the panel opposite from the vertical end profile by sliding the metal extrusion into the groove on the side of the panel.
2. Depending upon the type of wall, either anchor directly through the flat part of the H-profile or predrill the wall for the appropriate type of anchor.



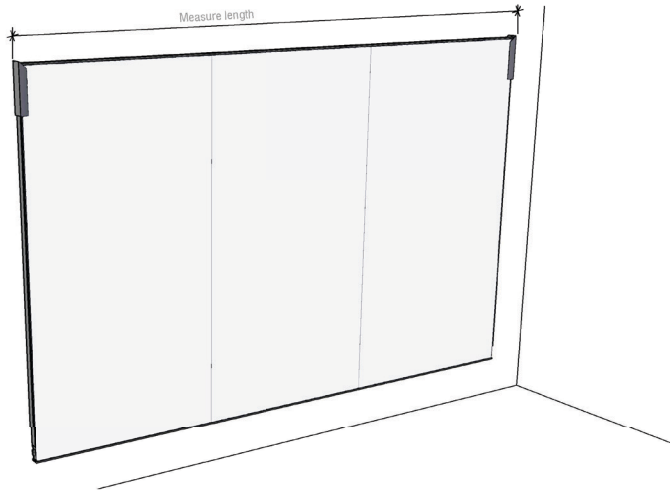
Step Six

1. Repeat step 5 for the remaining panels
2. Place the final panel into position and hold in place with a temporary piece of cover trim 8" (200 mm).

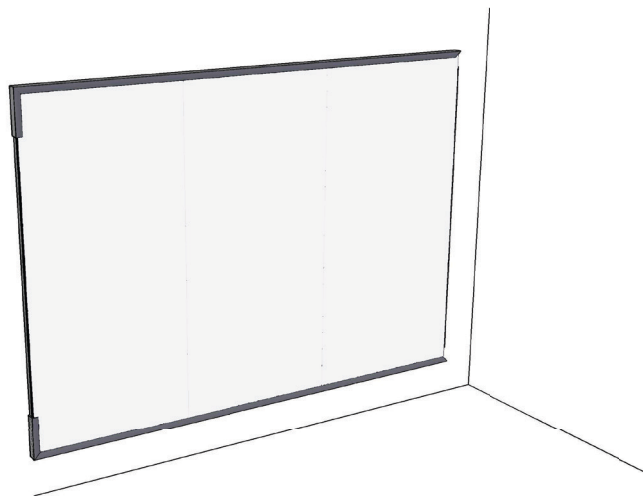


Step Seven

1. Place the temporary snap on cover trim pieces on each end of the verticals.

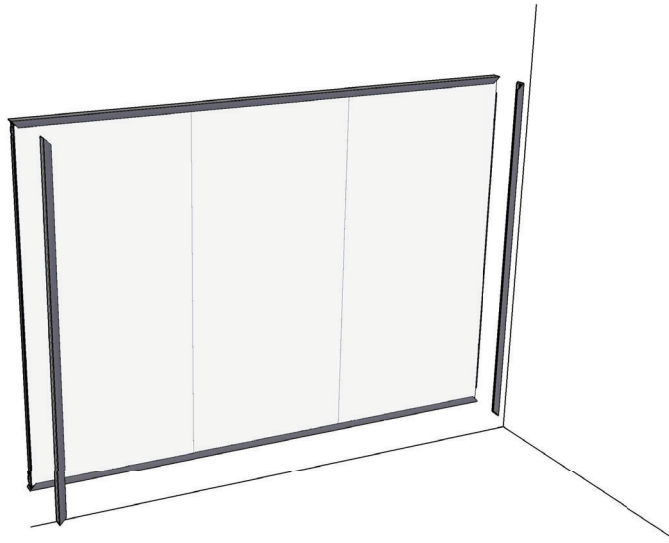


2. Measure and miter cut the top and bottom cover trim (top frame).
3. Place snap on cover trim being sure to install using a piece of soft wood blocking or a rubber mallet in order to avoid damaging the exposed finish. Start the profile aligned with the bottom/top of the panel. Once the profiles are fixed they will be difficult to remove without damaging.



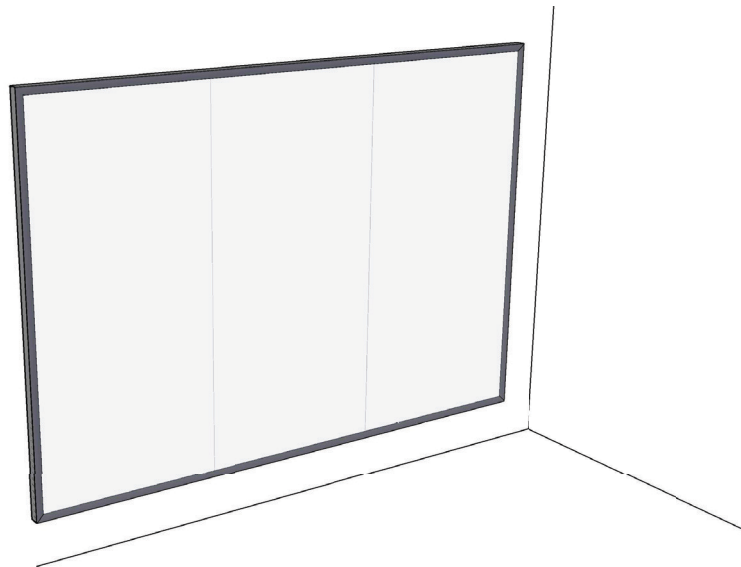
Step Eight

1. Measure and miter cut the vertical cover trim (top frame).
2. Place snap on cover trims being sure to install using a piece of soft wood blocking or a rubber mallet in order to avoid damaging the exposed finish. Start the profile aligned with the panel. Once the profiles are fixed they will be difficult to remove without damaging.



Step Nine

1. Installation for Workwall is complete.



Collaborative Products Warranty

CeramicSteel Surface: Forever warranty

Polyvision warrants that all porcelain-enameled surfaces and/or products made with CeramicSteel will retain its writing and erasing qualities and maintain its gloss variance and color consistency for the life of the building or for as long as the product is in use, whichever comes first.

Panel Construction and Mobile: 10 year limited warranty

Polyvision warrants that our panels, under normal atmospheric conditions and when sealed from moisture, will not delaminate from the substrate or warp for a period of 10 years. Polyvision warrants that our Mobile products, when used under normal conditions, will perform as intended for a period of 10 years

Accessories: 2 year limited warranty

Polyvision warrants that our accessories, including but not limited to Collaborative ToolBar and round magnetic eraser, when used under normal conditions will perform as intended for a period of 2 years. Consumables like markers and chalk sticks are not covered by the Accessories warranty

Alternative Materials: Limited Warranty

Polyvision warrants that our glass products, including but not limited to glassboards, when used under normal conditions will perform as intended for a period of 5 years. Manufacturing defects are warranted for a period of 5 years. Polyvision warrants that our tackable products, including but not limited to Tac, when used under normal conditions will perform as intended for a period of 2 years. Tackable products are warranted under the conditional terms of interior use only.

Should any failure to conform to this warranty become apparent, then, upon written notice from the customer, Polyvision, at its option, will correct such nonconformity by repair or replacement. Correction in the manner provided above shall constitute a fulfillment of all liabilities of Polyvision with respect to the quality of the CeramicSteel. The warranty is applicable only under normal usage and maintenance and does not cover defects caused by improper handling, vandalism or abuse, or arising from failure to follow Polyvision's instructions and recommendations for maintenance.

The warranty is voided if any modifications are made to the products by the customer or other trades with or without Polyvision's written consent or prior knowledge. The warranty does not include the cost of removal or reinstallation. This warranty is effective as of July 12, 2019, and supersedes the terms and conditions of all prior surface warranties issued to the customer by Polyvision.

This limited warranty is the sole remedy for product defects and no other express or implied warranty is provided, including but not limited to any implied warranties of merchantability or fitness for a particular purpose. Polyvision shall not be liable for consequential or incidental damages arising from any product defect.



Polyvision Americas

4301 N Wood Drive
Okmulgee, OK 74447 USA

T 1 888 325 6351
E info@polyvision.com

Polyvision Europe

Zuiderring 56
3600 Genk, Belgium

T +32 89 32 31 30
E EMEAsupport@polyvision.com

Polyvision Asia-Pacific

15th Floor, Kinwick Centre
32 Hollywood Road, Central District
Hong Kong

T +852 2520 0160
E APACsupport@polyvision.com

SURFACEMATTERS™

©2024 Polyvision Corporation. All rights reserved. Trademarks used herein are the property of Polyvision Corporation or of their respective owner. Polyvision Corporation reserves the right to make changes in product design, construction or detail, and to discontinue any product or material without notice.

polyvision.com



05-01-2024