

Textura Mobile



Block out distractions wherever you are while keeping your notes close at hand.

Textura Mobile blends sound-diffusing acoustic panels with durable CeramicSteel writing surfaces for a multipurpose collaborative worktool on wheels.

Versatility Redefined

Allow users to capture ideas anywhere while reducing noise in busy workspaces. Textura Mobile is made with premium materials including CeramicSteel whiteboard panels, textile-covered acoustic sound-absorbing panels, and casters that lock and unlock so it can roll smoothly.

Safe, Adaptable Privacy

The possibilities with Textura Mobile are vast. Create separate spaces and barriers between workers or students, place multiple boards together for larger brainstorming sessions, relocate for impromptu collaboration, or effortlessly store it out of the way to save space.

Features

- Writing board made from smooth, inorganic CeramicSteel
- Acoustic core and textiles made from recycled materials
- Smooth-rolling casters with locks
- Sound-absorbing panels
- Sturdy aluminum frame
- Easy to clean
- Strong magnetic capability
- Resistant to scratches, stains, fire and bacteria
- Nests for space-saving



Collaboration

White Gloss CeramicSteel with Marianna textile





White Gloss CeramicSteel with Madura, Scuba and Slip Textiles



No Compromises, Just Quality

Made with CeramicSteel, Textura Mobile features a smooth, glass-like surface that is magnetic and easy to clean. Resistant to scratches, stains, fire and bacteria, CeramicSteel offers lasting durability with a life span of more than 50 years.

What You Need, Where You Need It

Designed to fit a variety of spaces and work styles, Textura Mobile is available in one size, as a single- or double-sided whiteboard.

Specifications



Double-Sided CeramicSteel

Markerboard and fabric on both sides



Single-Sided CeramicSteel

Acoustic panel on one side, markerboard and fabric on the other side

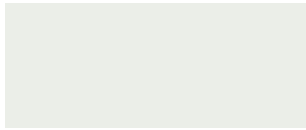


Thoughtfully Selected Materials

Textura Mobile offers various coated aluminum frame options, as well as eight textile options that complement the finishes to blend seamlessly into any project.

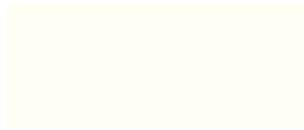
The thoughtfully selected fabrics are a high-grade crêpe weave synthetic fabric with a non-lustrous appearance and are manufactured from 100% recycled polyester.

CeramicSteel Color



Arctic White Gloss
Finish Code - 7671
Pantone Match - 11-4800 TPG

Frame Colors



Traffic White
Finish Code - PV 10
RAL Match - 9016



Anodized Aluminum
Finish Code - PV9006
RAL Match - 9006



Black
Finish Code - PV9005
RAL Match - 9005

Textile Options



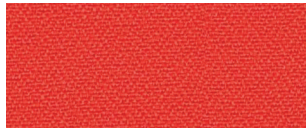
Slip DB55



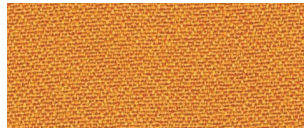
Blizzard DB60



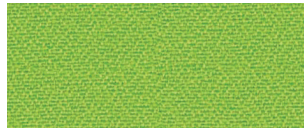
Havana DB61



Tortuga DB58



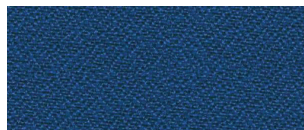
Solano DB59



Madura DB57



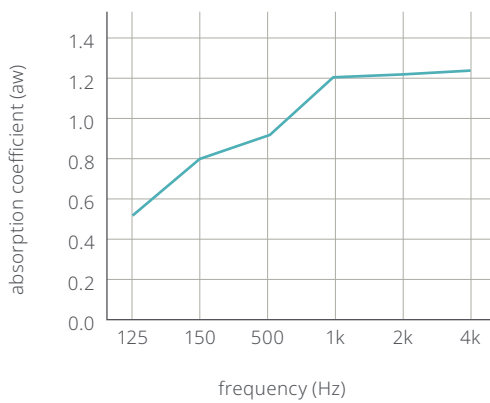
Marianna DB56



Scuba DB62

Specifications

Dimensions	Single-Sided Whiteboard	Double-Sided Whiteboard
Overall Height	75 in / 190.5 cm	75 in / 190.5 cm
Overall Width	46.8 in / 119 cm	46.8 in / 119 cm
Depth (board)	1.96 in / 5 cm	1.96 in / 5 cm
Depth (base)	20.3 in / 51.6 cm	20.3 in / 51.6 cm
Weight	30 kg / 66.13 lbs	39 kg / 85.98 lbs



Diffuse Noise, Not Teamwork

The acoustic panel core is made of recycled textile fiber that is 100% recyclable and resistant to mold. It complies with fire class B / S1 / Do. Sound absorption (ISO 354) aw0.95.





Hygienic Surface

CeramicSteel is a nonporous surface that is naturally resistant to bacteria and viruses. Coils, sheets, and panels with type U finish are also available in Polyvision's Hygienic CeramicSteel — a proprietary finish that incorporates an additive of silver micro particles formulated to create a self-sanitizing surface.

Sustainable

Polyvision's e³ CeramicSteel is Cradle to Cradle Certified™ Silver, highlighting the sustainable manufacturing process of the product. CeramicSteel is also 99.9% recyclable. CeramicSteel is also certified by SCS Global Services as Indoor Advantage Gold™, meeting strict indoor air quality (IAQ) chemical emission limits for volatile organic compounds (VOCs).

Customizable

CeramicSteel type H and U can be customized to support specific sheet sizes, custom colors and digital printing. Incorporate our material into your whiteboard design for premium aesthetics and functionality.

CeramicSteel Features and Benefits

- Smooth, inert surface
- Made from inorganic materials
- Magnetic
- Colorfast, will never fade
- Resistant to bacteria, graffiti, fire, scratches, stains, and chemicals
- Easy to clean
- Releases zero VOCs

Corporate Responsibility

Polyvision believes that sustainability is an important business practice in today's global economy. In line with this belief, we strive for continuous improvement in all areas of environmental stewardship — responsible use of raw materials and natural resources, manufacturing processes and operation of all facilities — to reduce the impact of our activities on the environment. In the end, we believe we are all in this together, working to protect and cultivate the world we live in to make more sustainable choices.



Manufacturing Excellence

All Polyvision facilities are compliant with international standards and certified for Quality, Environment, Health and Safety. Our environmental goals aim to reduce and manage our global environment footprint in the areas of VOC emission, water use, waste output and CO₂ emission.



- ISO 9001 Quality Management Systems Certification
- ISO 45001 Occupational Health & Safety Management Certification



Ensuring A Sustainable Future

In addition to safe and sustainable manufacturing processes, Polyvision holds our products to the highest standards. We are third-party certified for our CeramicSteel surface by:



- Cradle to Cradle Certified — releases no harmful chemicals into the environment, safeguards clean water, materials are safe for humans and the environment
- Indoor Air Quality Certified to SCS.EC10.3-2014 v4.0
- ISO 14001 Environmental Management Certification



Polyvision Americas

4301 N Wood DR
Okmulgee, OK 74447 USA

T 1 888 325 6351
E info@polyvision.com

Polyvision Europe

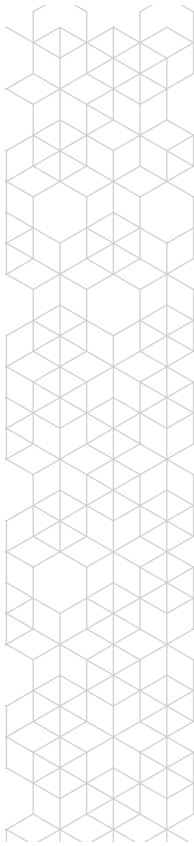
Zuiderring 56
3600 Genk, Belgium

T +32 89 32 31 30
E EMEAsupport@polyvision.com

Polyvision Asia-Pacific

15th Floor, Kinwick Centre
32 Hollywood Road, Central District, Hong Kong

T +852 2520 0160
E APACsupport@polyvision.com



SURFACEMATTERS™

©2024 Polyvision Corporation. All rights reserved. Trademarks used herein are the property of Polyvision Corporation or of their respective owner. Polyvision Corporation reserves the right to make changes in product design, construction or detail, and to discontinue any product or material without notice.

polyvision.com



04-29-2024 EMEA