

# Interior Panels



CeramicSteel integrated as a wall surface  
creating a fluid collaboration space

# Introduction

Attention to detail makes the big picture. This is why Polyvision created Interior Panels. These CeramicSteel products are a unique approach to today's market demand for sustainable, hygienic surfaces in public and corporate spaces. As spaces flex to accommodate varying volumes of people, design elements that provide form and function while protecting the hygienic conditions of the space are becoming the gold star of smart design.





## Hygienic Surface

CeramicSteel is a nonporous surface that is naturally resistant to bacteria and viruses. Coils, sheets, and panels with type U finish are also available in Polyvision's Hygienic CeramicSteel — a proprietary finish that incorporates an additive of silver micro particles formulated to create a self-sanitizing surface.

## Sustainable

Polyvision's e<sup>3</sup> CeramicSteel is Cradle to Cradle Certified™ Silver, highlighting the sustainable manufacturing process of the product. CeramicSteel is also 99.9% recyclable. CeramicSteel is also certified by SCS Global Services as Indoor Advantage Gold™, meeting strict indoor air quality (IAQ) chemical emission limits for volatile organic compounds (VOCs).

## Customizable

CeramicSteel type H and U can be customized to support specific sheet sizes, custom colors and digital printing. Incorporate our material into your whiteboard design for premium aesthetics and functionality.

## CeramicSteel Features and Benefits

- Smooth, inert surface
- Made from inorganic materials
- Magnetic
- Colorfast, will never fade
- Resistant to bacteria, graffiti, fire, scratches, stains, and chemicals
- Easy to clean
- Releases zero VOCs





### Panel Construction

Prefabricated panels available in standard or custom shapes and sizes.

1. CeramicSteel with optional hygienic finish
2. Fiberboard or composite substrate
3. Steel backing

\*Framing and installation systems are not provided with panels.

### Material Attribute Comparison

Wall Surface Material	Magnetic	Non-Porous	Easily Disinfected	Scratch-Resistant	Can Service as Writing Surface
Wood	No	No	No	No	No
Gypsum	No	No	No	No	No
Aluminum	No	Yes	Yes	No	No
Stainless Steel	Yes	Yes	Yes	Yes	When modified with paint coating
Glass	Only when modified with steel sheet addition & utilizing rare earth magnets	Yes	Yes	No - can also easily shatter	Yes - but highly reflective
CeramicSteel	Yes	Yes	Yes	Yes	Yes
Decoustics	No	No	No	No	No



With state-of-the-art manufacturing and design, Polyvision's ability to create custom shapes, sizes and surface imagery is endless.

## Applications

CeramicSteel panels can be utilized to enhance the performance and environment of the following spaces:

- Streamlined Collaborative Surfaces for Conference Rooms & Classrooms
- Systems integration for the contract furniture industry
- Sanitary Surfaces for Patient Rooms / Clean Rooms
- Sanitizing, Durable Surfaces for High Traffic Vertical Planes & Countertops in Quick Service Restaurants (QSR)
- Sanitizing, Durable Surfaces for High Traffic Vertical Planes & Countertops in Fuel Stations & Convenience Stores
- Sanitizing, Durable Surfaces for Grocery and Pharmacy
- Sanitizing, Durable Surfaces for Vertical Planes & Partitions in Public Restrooms
- Sanitizing, Durable Surfaces for Commercial Kitchens & Food Grade Warehousing
- Sanitizing, Durable Vertical Planes for Hospitality, Hotel, & Office Lobbies
- Sanitizing, Durable Surfaces on Elevator Vestibules
- Sanitizing, Durable Vertical Planes for high foot traffic areas such as airports, stadiums, and mass transport stations



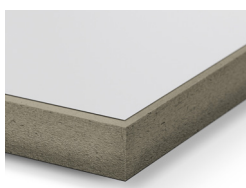
The ability to incorporate your brand elements in durable, lasting CeramicSteel can be achieved with Polyvision Studio.



## Interior Panel Options

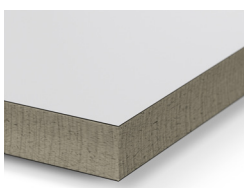
### Finishing Options

End-use-application determines the finishing and thickness of the CeramicSteel panel. Polyvision offers a set of standard substrate choices and three finishing options. Interior panels are offered with CeramicSteel as single or double-sided.



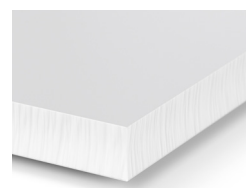
#### Basic

Not waterjet, sides not painted. Use always in combination with a frame.



#### Standard

Waterjet, sides not painted.



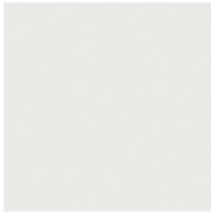
#### Finished

Waterjet, sides painted.

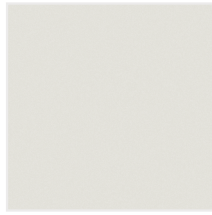
### Standard Sizes

Basic	Standard	Finished
1200 x 1240 mm	1185 x 1220 mm	1185 x 1220 mm
1200 x 1850 mm	1185 x 1830 mm	1185 x 1830 mm
1200 x 2440 mm	1185 x 2420 mm	1185 x 2420 mm
1200 x 2870 mm	1185 x 2850 mm	1185 x 2850 mm
1200 x 3050 mm	1185 x 3000 mm	1185 x 3000 mm

## Color Options



Arctic White 2 CS



Seagull CS



Platinum Solid CS



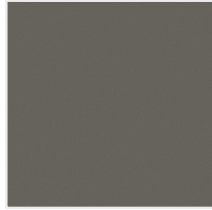
Sterling Dark CS



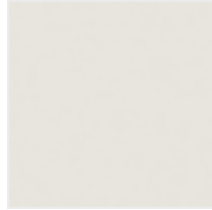
Merle CS



Black Gloss



Gray Chalk



Hygienic White Gloss

## Premium Colors\*



Alabaster  
5650



6104



Delicate Blue  
6120



Golden Kiwi Light  
6121



Tropical Peach Light  
6122



Seasalt  
6123

## Available Finishes

- Ultra Gloss (EMEA/APAC)
- High Gloss (Americas)
- Satin Gloss (Americas)
- Low Gloss (EMEA/APAC)

## Specialty Colors\*

Polyvision offers expanded design aesthetics through digital printing of images directly on the CeramicSteel surface. Minimum order quantities apply.

## Standard Shapes



## Specialty Shapes



## Polyvision Studio

Collaborate with our team of designers and color experts to develop one-of-a-kind panels for your installation. From unique shapes to custom colors and digitally printed images – your imagination is the limit.



# Corporate Responsibility

Polyvision believes that sustainability is an important business practice in today's global economy. In line with this belief, we strive for continuous improvement in all areas of environmental stewardship — responsible use of raw materials and natural resources, manufacturing processes and operation of all facilities — to reduce the impact of our activities on the environment. In the end, we believe we are all in this together, working to protect and cultivate the world we live in to make more sustainable choices.



## Manufacturing Excellence

All Polyvision facilities are compliant with international standards and certified for Quality, Environment, Health and Safety. Our environmental goals aim to reduce and manage our global environment footprint in the areas of VOC emission, water use, waste output and CO<sub>2</sub> emission.



- ISO 9001 Quality Management Systems Certification
- ISO 45001 Occupational Health & Safety Management Certification



## Ensuring A Sustainable Future

In addition to safe and sustainable manufacturing processes, Polyvision holds our products to the highest standards. We are third-party certified for our CeramicSteel surface by:



- Cradle to Cradle Certified — releases no harmful chemicals into the environment, safeguards clean water, materials are safe for humans and the environment
- Indoor Air Quality Certified to SCS.EC10.3-2014 v4.0
- ISO 14001 Environmental Management Certification





# Warranty Protection

Interior panels utilize the CeramicSteel which offers one of the industry's most comprehensive warranty with lifetime surface warranty for interior applications. Panel performance is subject to the panel & substrate material warranty.

## **CeramicSteel Surface**

Forever warranty Polyvision warrants that all porcelain-enameled surfaces and/or products made with CeramicSteel (Premium Writing Surfaces) or CeramicSteel (Collaborative Products) will retain its writing and erasing qualities and maintain its gloss variance and color consistency for the life of the building or for as long as the product is in use, whichever comes first.

## **Panel Construction**

10 year limited warranty Polyvision warrants that our panels, under normal atmospheric conditions and when sealed from moisture, will not delaminate from the substrate or warp for a period of 10 years.

# International Sales & Fulfillment

For more information and orders, please contact the regional team closest to you.

## **Americas**

info@polyvision.com | 1.678.542.3100

## **Europe, Middle East + Africa**

EMEAsupport@polyvision.com | +32.89.32.31.30

## **Asia Pacific**

APACsupport@polyvision.com | +852.2520.0160



## Polyvision Americas

4301 N Wood DR  
Okmulgee, OK 74447 USA

T 1 888 325 6351  
E [info@polyvision.com](mailto:info@polyvision.com)

## Polyvision Europe

Zuiderring 56  
3600 Genk, Belgium

T +32 89 32 31 30  
E [EMEAsupport@polyvision.com](mailto:EMEAsupport@polyvision.com)

## Polyvision Asia-Pacific

15th Floor, Kinwick Centre  
32 Hollywood Road, Central District, Hong Kong

T +852 2520 0160  
E [APACsupport@polyvision.com](mailto:APACsupport@polyvision.com)



## SURFACEMATTERS™

©2024 Polyvision Corporation. All rights reserved. Trademarks used herein are the trademarks of Polyvision Corporation or their respective owner. Polyvision Corporation reserves the right to make changes in product design, construction or detail, and to discontinue any product or material without notice.

\*Pantone is a trademark of Pantone LLC. Use of the Pantone trademark does not imply an endorsement, sponsorship, or affiliation.

[polyvision.com](https://polyvision.com)



05-30-2024 EMEA APAC