

# Flow™ Framed



Share ideas seamlessly with a thoughtfully designed, high-performance writing board.

# Introduction

Flow Framed is a full-wall writing system that allows users to mount panels side-by-side for maximum writing surface space.





## Hygienic Surface

CeramicSteel is a nonporous surface that is naturally resistant to bacteria and viruses. Coils, sheets, and panels with type U finish are also available in Polyvision's Hygienic CeramicSteel — a proprietary finish that incorporates an additive of silver micro particles formulated to create a self-sanitizing surface.

## Sustainable

Polyvision's e<sup>3</sup> CeramicSteel is Cradle to Cradle Certified™ Silver, highlighting the sustainable manufacturing process of the product. CeramicSteel is also 99.9% recyclable. CeramicSteel is also certified by SCS Global Services as Indoor Advantage Gold™, meeting strict indoor air quality (IAQ) chemical emission limits for volatile organic compounds (VOCs).

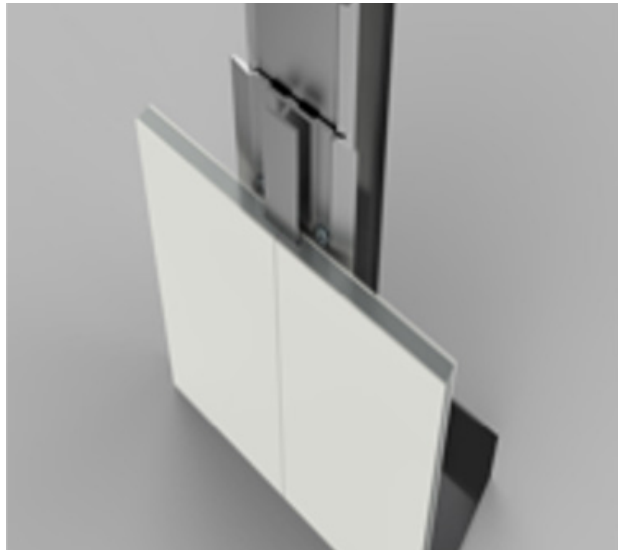
## Customizable

CeramicSteel type H and U can be customized to support specific sheet sizes, custom colors and digital printing. Incorporate our material into your whiteboard design for premium aesthetics and functionality.

## CeramicSteel Features and Benefits

- Smooth, inert surface
- Made from inorganic materials
- Magnetic
- Colorfast, will never fade
- Resistant to bacteria, graffiti, fire, scratches, stains, and chemicals
- Easy to clean
- Releases zero VOCs





### Panel Construction

Panels available in standard and custom sizes.

1. CeramicSteel with optional hygienic finish
2. 12 mm water resistant MDF
3. Aluminum backing

\*Mounting hardware included, no interior frames

### Material Attribute Comparison

Wall Surface Material	Magnetic	Non-Porous	Easily Disinfected	Scratch-Resistant	Can Service as Writing Surface
Wood	No	No	No	No	No
Gypsum	No	No	No	No	No
Aluminum	No	Yes	Yes	No	No
Stainless Steel	Yes	Yes	Yes	Yes	When modified with paint coating
Glass	Only when modified with steel sheet addition & utilizing rare earth magnets	Yes	Yes	No - can also easily shatter	Yes - but highly reflective
CeramicSteel	Yes	Yes	Yes	Yes	Yes
Acoustic Material	No	No	No	No	No



With state-of-the-art manufacturing and design processes, Polyvision's ability to create custom surface imagery is endless.

### Flow Applications

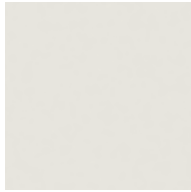
Flow full-wall systems can be utilized to enhance the performance and environment of the following spaces:

- Streamlined Collaborative Surfaces for Conference Rooms & Classrooms
- Sanitary, digitally printed walls for Patient Rooms
- Self-Sanitizing, Durable Surfaces for High Traffic Vertical Planes in Transit Stations and Airports
- Sanitizing, Durable Vertical Planes for Hospitality, Hotel, & Office Lobbies
- Sanitizing, Durable Surfaces on Elevator Vestibules
- Sanitizing, Durable Vertical Planes for high foot traffic areas such as airports, stadiums, and mass transport stations

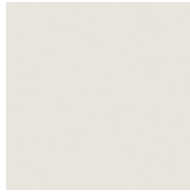


# Flow Options

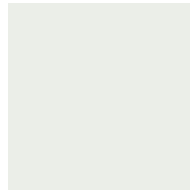
## Color Options



7664 White Gloss  
6100U CS



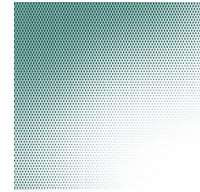
White Low Gloss  
6100L



Hygienic White Gloss  
PV09



Gray Chalk  
6502C



Surface Imaging CS (COM)  
7699

## Available Finishes

- Gloss Markerboard
- Matte Chalkboard

## Specialty Colors

Polyvision offers expanded design aesthetics through digital printing of images directly on the CeramicSteel surface. Minimum order quantities apply.



## Standard Panel Sizes

Dimensions (W x H)	Thickness	Weight
1185 mm x 1830 mm / 47 in x 72 in	13 mm / 0.51 in	28 kg / 61.7 lbs
1185 mm x 2420 mm / 47 in x 95 in	13 mm / 0.51 in	37 kg / 81.5 lbs

The ability to incorporate your brand elements in durable, lasting CeramicSteel can be achieved with Polyvision Studio.



### **Polyvision Studio**

Collaborate with our team of designers and color experts to develop one-of-a-kind looks for your installation. From custom colors to digitally printed images — your imagination is the limit.



# Corporate Responsibility

Polyvision believes that sustainability is an important business practice in today's global economy. In line with this belief, we strive for continuous improvement in all areas of environmental stewardship — responsible use of raw materials and natural resources, manufacturing processes and operation of all facilities — to reduce the impact of our activities on the environment. In the end, we believe we are all in this together, working to protect and cultivate the world we live in to make more sustainable choices.



## Manufacturing Excellence

All Polyvision facilities are compliant with international standards and certified for Quality, Environment, Health and Safety. Our environmental goals aim to reduce and manage our global environment footprint in the areas of VOC emission, water use, waste output and CO<sub>2</sub> emission.



- ISO 9001 Quality Management Systems Certification
- ISO 45001 Occupational Health & Safety Management Certification



## Ensuring A Sustainable Future

In addition to safe and sustainable manufacturing processes, Polyvision holds our products to the highest standards. We are third-party certified for our CeramicSteel surface by:



- Cradle to Cradle Certified — releases no harmful chemicals into the environment, safeguards clean water, materials are safe for humans and the environment
- Indoor Air Quality Certified to SCS.EC10.3-2014 v4.0
- ISO 14001 Environmental Management Certification





# Warranty Protection

Interior panels utilize the CeramicSteel which offers one of the industry's most comprehensive warranty with lifetime surface warranty for interior applications. Panel performance is subject to the panel & substrate material warranty.

## **CeramicSteel Surface**

Forever warranty Polyvision warrants that all porcelain-enameled surfaces and/or products made with CeramicSteel (Premium Writing Surfaces) or CeramicSteel (Collaborative Products) will retain its writing and erasing qualities and maintain its gloss variance and color consistency for the life of the building or for as long as the product is in use, whichever comes first.

## **Panel Construction**

10 year limited warranty Polyvision warrants that our panels, under normal atmospheric conditions and when sealed from moisture, will not delaminate from the substrate or warp for a period of 10 years.

# International Sales & Fulfillment

For more information and orders, please contact the regional team closest to you.

## **Americas**

info@polyvision.com | 1.678.542.3100

## **Europe, Middle East + Africa**

EMEAsupport@polyvision.com | +32.89.32.31.30

## **Asia Pacific**

APACsupport@polyvision.com | +852.2520.0160



## Polyvision Americas

4301 N Wood DR  
Okmulgee, OK 74447 USA

T 1 888 325 6351  
E [info@polyvision.com](mailto:info@polyvision.com)

## Polyvision Europe

Zuiderring 56  
3600 Genk, Belgium

T +32 89 32 31 30  
E [EMEAsupport@polyvision.com](mailto:EMEAsupport@polyvision.com)

## Polyvision Asia-Pacific

15th Floor, Kinwick Centre  
32 Hollywood Road, Central District, Hong Kong

T +852 2520 0160  
E [APACsupport@polyvision.com](mailto:APACsupport@polyvision.com)



## **SURFACEMATTERS™**

©2024 Polyvision Corporation. All rights reserved. Trademarks used herein are the property of Polyvision Corporation or of their respective owner. Polyvision Corporation reserves the right to make changes in product design, construction or detail, and to discontinue any product or material without notice.

[polyvision.com](http://polyvision.com)



05-01-2024 APAC